



200-125^{Q&As}

CCNA Cisco Certified Network Associate CCNA (v3.0)

Pass Cisco 200-125 Exam with 100% Guarantee

Free Download Real Questions & Answers **PDF** and **VCE** file from:

<https://www.geekcert.com/200-125.html>

100% Passing Guarantee
100% Money Back Assurance

Following Questions and Answers are all new published by Cisco
Official Exam Center

-  **Instant Download** After Purchase
-  **100% Money Back** Guarantee
-  **365 Days** Free Update
-  **800,000+** Satisfied Customers






QUESTION 1

Refer to the exhibit.

```
R1# show frame-relay map
Serial0/0 (up): ip 172.16.3.1 dlci 100 (0x64, 0x1840), dynamic
broadcast, status defined, active
```



What is the meaning of the term dynamic as displayed in the output of the show frame-relay map command shown?

- A. The Serial0/0 interface is passing traffic.
- B. The DLCI 100 was dynamically allocated by the router.
- C. The Serial0/0 interface acquired the IP address of 172.16.3.1 from a DHCP server.
- D. The DLCI 100 will be dynamically changed as required to adapt to changes in the Frame Relay cloud.
- E. The mapping between DLCI 100 and the end station IP address 172.16.3.1 was learned through Inverse ARP.

Correct Answer: E

Explanation

Inverse Address Resolution Protocol (Inverse ARP) was developed to provide a mechanism for dynamic DLCI to Layer 3 address maps. Inverse ARP works much the same way Address Resolution Protocol (ARP) works on a LAN. However, with ARP, the device knows the Layer 3 IP address and needs to know the remote data link MAC address. With Inverse ARP, the router knows the Layer 2 address which is the DLCI, but needs to know the remote Layer 3 IP address. When using dynamic address mapping, Inverse ARP requests a next-hop protocol address for each active PVC. Once the requesting router receives an Inverse ARP response, it updates its DLCI-to-Layer 3 address mapping table. Dynamic address mapping is enabled by default for all protocols enabled on a physical interface. If the Frame Relay environment supports LMI autosensing and Inverse ARP, dynamic address mapping takes place automatically. Therefore, no static address mapping is required.

QUESTION 2

What value is primarily used to determine which port becomes the root port on each nonroot switch in a spanning-tree topology?

- A. path cost
- B. lowest port MAC address
- C. VTP revision number
- D. highest port priority number
- E. port priority number and MAC address



Correct Answer: A

Explanation

The path cost to the root bridge is the most important value to determine which port will become the root port on each non-root switch. In particular, the port with lowest cost to the root bridge will become root port (on non-root switch).

QUESTION 3

```

R1#show ip route
Codes: C - connected, S - static, R - RIP, M - mobile, B - BGP
       D - EIGRP, EX - EIGRP external, O - OSPF, IA - OSPF inter area
       N1 - OSPF NSSA external type 1, N2 - OSPF NSSA external type 2
       E1 - OSPF external type 1, E2 - OSPF external type 2
       i - IS-IS, su - IS-IS summary, L1 - IS-IS level-1, L2 - IS-IS
       ia - IS-IS inter area, * - candidate default, U - per-user static route
       o - ODR, P - periodic downloaded static route

Gateway of last resort is 192.168.14.4 to network 0.0.0.0

C    192.168.12.0/24 is directly connected, FastEthernet0/0
C    192.168.13.0/24 is directly connected, FastEthernet0/1
C    192.168.14.0/24 is directly connected, FastEthernet1/0
O    192.168.10.0/24 is variably subnetted, 3 subnets, 3 masks
O    192.168.10.0/27 [110/2] via 192.168.14.4, 00:02:01, FastEthernet1/0
O    192.168.10.4/27 [110/11] via 192.168.13.3, 00:00:52, FastEthernet1/0
O    192.168.0.0/16 [110/2] via 192.168.15.5, 00:05:01, FastEthernet1/0
D    192.168.10.1/32 [90/50778] via 192.168.12.2, 00:03:44, FastEthernet1/0
O*E2 0.0.0.0/0 [110/1] via 192.168.14.4, 00:00:10, FastEthernet1/0
  
```

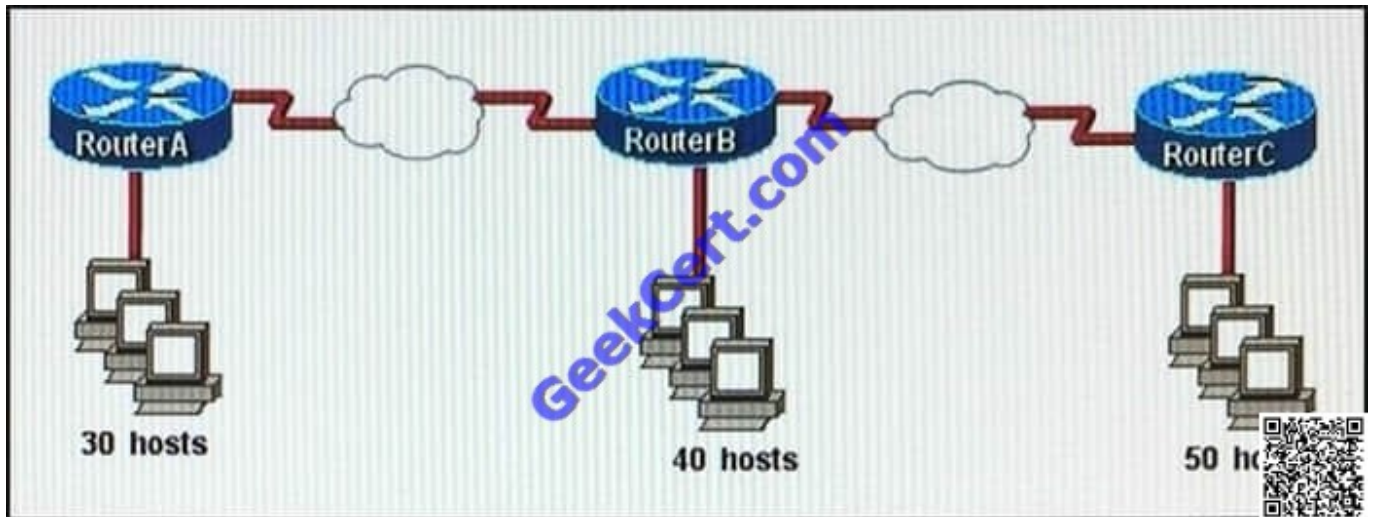
Refer to the exhibit , on R1, which routing protocol is in use on the route to 192.168.10.1?

- A. EIGRP
- B. OSPF
- C. RIP
- D. BGP

Correct Answer: A

Explanation

QUESTION 4



Refer to the exhibit. The enterprise has decided to use the network address 172.16.0.0. The network administrator needs to design a classful addressing scheme to accommodate the three subnets, with 30, 40, and 50 hosts, as shown. Which subnet mask would accommodate this network?

- A. 255.255.255.224
- B. 255.255.255.240
- C. 255.255.255.252
- D. 255.255.255.248
- E. 255.255.255.192

Correct Answer: E

Explanation

QUESTION 5

What SNMP message alerts the manager to a condition on the network?

- A. response
- B. get
- C. trap
- D. capture

Correct Answer: C

Explanation

An agent can send unsolicited traps to the manager. Traps are messages alerting the SNMP manager to a condition on the network. Traps can mean improper user authentication, restarts, link status (up or down), MAC address tracking, closing of a TCP connection, loss of connection to a neighbor, or other significant events.



Reference:

http://www.cisco.com/c/en/us/td/docs/switches/lan/catalyst2950/software/release/12-1_9_ea1/configuration/guide/scg/swsnmp.html

QUESTION 6

While troubleshooting a DHCP client that is behaving erratically, you discover that the client has been assigned the same IP address as a printer that is a static IP address. Which option is the best way to resolve the problem?

- A. Configure static route to the client.
- B. Assign the client the same IP address as the router.
- C. Move the client to another IP subnet
- D. Move the printer to another IP subnet.
- E. Reserve the printer IP address.

Correct Answer: E

Explanation

QUESTION 7

Which three statements about the features of SNMPv2 and SNMPv3 are true? (Choose three.)

- A. SNMPv3 enhanced SNMPv2 security features.
- B. SNMPv3 added the Inform protocol message to SNMP.
- C. SNMPv2 added the Inform protocol message to SNMP.
- D. SNMPv3 added the GetBulk protocol messages to SNMP.
- E. SNMPv2 added the GetBulk protocol message to SNMP.
- F. SNMPv2 added the GetNext protocol message to SNMP.

Correct Answer: ACE

SNMPv1/v2 can neither authenticate the source of a management message nor provide encryption. Without authentication, it is possible for nonauthorized users to exercise SNMP network management functions. It is also possible for nonauthorized users to eavesdrop on management information as it passes from managed systems to the management system. Because of these deficiencies, many SNMPv1/v2 implementations are limited to simply a read-only capability, reducing their utility to that of a network monitor; no network control applications can be supported. To correct the security deficiencies of SNMPv1/v2, SNMPv3 was issued as a set of Proposed Standards in January 1998. -> A is correct. The two additional messages are added in SNMP2 (compared to SNMPv1)



GetBulkRequest The GetBulkRequest message enables an SNMP manager to access large chunks of data. GetBulkRequest allows an agent to respond with as much information as will fit in the response PDU. Agents that cannot provide values for all variables in a list will send partial information. -> E is correct.

InformRequest The InformRequest message allows NMS stations to share trap information. (Traps are issued by SNMP agents when a device change occurs.) InformRequest messages are generally used between NMS stations, not between NMS stations and agents. -> C is correct.

Note: These two messages are carried over SNMPv3.

QUESTION 8

During which phase of PPPoE is PPP authentication performed?

- A. the PPP Session phase
- B. Phase 2
- C. the Active Discovery phase
- D. the Authentication phase
- E. Phase 1

Correct Answer: A

QUESTION 9

Which DTP switch port mode allows the port to create a trunk link if the neighboring port is in trunk mode, dynamic desirable mode, or desirable auto mode?

- A. trunk
- B. access
- C. dynamic desirable
- D. dynamic auto

Correct Answer: C

Explanation

QUESTION 10

Which type of topology is required by DMVPN?

- A. ring
- B. full mesh



- C. hub-and-spoke
- D. partial mesh

Correct Answer: C

QUESTION 11

Which method does a connected trunk port use to tag VLAN traffic?

- A. IEEE 802 1w
- B. IEEE 802 1D
- C. IEEE 802 1Q
- D. IEEE 802 1p

Correct Answer: C

<http://www.cisco.com/c/en/us/support/docs/lan-switching/8021q/17056-741-4.html>

QUESTION 12

Which command should you enter to verify the priority of a router in an HSRP group?

- A. show sessions
- B. show interfaces
- C. show hsrp
- D. show standby

Correct Answer: D

Explanation

QUESTION 13

Which statement describes the effect of the overload keyword in the ip nat inside source list 90 interface ethernet 0/0 overload command?

- A. Addresses that match access list inside are translated to the IP address of the Ethernet 0/0 interface.
- B. Hosts that match access list inside are translated to an address in the Ethernet 0/0 network.
- C. Hosts on the Ethernet 0/0 LAN are translated to the address pool in access list 90.
- D. Addresses that match access list 90 are translated through PAT to the IP address of the Ethernet 0/0 interface.



Correct Answer: D

Explanation

QUESTION 14

A user is unable to connect to the Internet. Based on the layered approach to troubleshooting and beginning with the lowest layer, drag each procedure on the left to its proper category on the right.

Select and Place:

A user is unable to connect to the Internet. Based on the layered approach to troubleshooting and beginning with the lowest layer, drag each procedure on the left to its proper category on the right.

verify URL	Step 1
verify NIC operation	Step 2
verify IP configuration	Step 3
verify Ethernet cable connection	Step 4

Correct Answer:

A user is unable to connect to the Internet. Based on the layered approach to troubleshooting and beginning with the lowest layer, drag each procedure on the left to its proper category on the right.

	verify Ethernet cable connection
	verify NIC operation
	verify IP configuration
	verify URL

Explanation

The question asks us to “begin with the lowest layer” so we have to begin with Layer 1:

verify physical connection; in this case an Ethernet cable connection. For your information, “verify Ethernet cable connection” means that we check if the type of connection (crossover, straight-through, rollover...) is correct, the RJ45 headers

are plugged in, the signal on the cable is acceptable...

Next we “verify NIC operation”. We do this by simply making a ping to the loopback interface 127.0.0.1. If it works then the NIC card (layer 1, 2) and TCP/IP stack (layer 3) are working properly.

Verify IP configuration belongs to layer 3. For example, checking if the IP can be assignable for host, the PC’s IP is in the same network with the gateway...

Verifying the URL by typing in your browser some popular websites like google.com, microsoft.com to assure that the far end server is not down (it sometimes make we think we can’t access to the Internet). We are using a URL so this step



belongs to layer 7 of the OSI model.

QUESTION 15

Which QOS feature can drop traffic that exceeds the committed access rate?

- A. weighted fair queuing
- B. FIFO
- C. policing
- D. shaping

Correct Answer: A

Explanation

QUESTION 16

A network administrator has configured access list 173 to prevent Telnet and ICMP traffic from reaching a server with the address of 192.168.13.26. Which commands can the administrator issue to verify that the access list is working properly? (Choose three.)

- A. Router# ping 192.168.13.26
- B. Router# debug access-list 173
- C. Router# show open ports 192.168.13.26
- D. Router# show access-lists
- E. Router# show ip interface

Correct Answer: ADE

QUESTION 17

Which NTP command configures the local device as an NTP reference clock source?

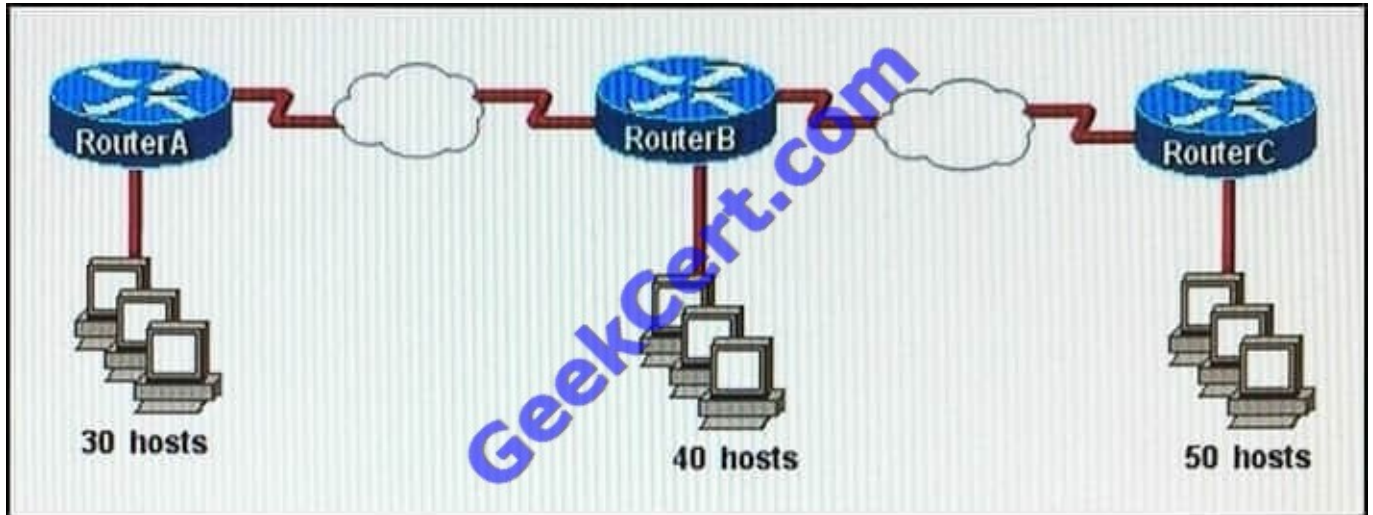
- A. ntp peer
- B. ntp broadcast
- C. ntp master
- D. ntp server

Correct Answer: C



Explanation

QUESTION 18



Refer to the exhibit. The enterprise has decided to use the network address 172.16.0.0. The network administrator needs to design a classful addressing scheme to accommodate the three subnets, with 30, 40, and 50 hosts, as shown. Which subnet mask would accommodate this network?

- A. 255.255.255.224
- B. 255.255.255.240
- C. 255.255.255.252
- D. 255.255.255.248
- E. 255.255.255.192

Correct Answer: E

QUESTION 19

A router has two Fast Ethernet interfaces and needs to connect to four VLANs in the local network. How can you accomplish this task, using the fewest physical interfaces and without decreasing network performance?

- A. Use a hub to connect the four VLANs with a Fast Ethernet interface on the router.
- B. Add a second router to handle the VLAN traffic.
- C. Add two more Fast Ethernet interfaces.
- D. Implement a router-on-a-stick configuration.



Correct Answer: D

A router on a stick allows you to use sub-interfaces to create multiple logical networks on a single physical interface.

QUESTION 20

Which two address are defined as private ip addresses ? (Choose two.)

- A. 192.169.32.10
- B. 10.172.76.200
- C. 172.15.2.250
- D. 12.17.1.20
- E. 172.31.255.100

Correct Answer: BE

QUESTION 21

Which three commands must you enter to create a trunk that allows VLAN 20? (Choose three)

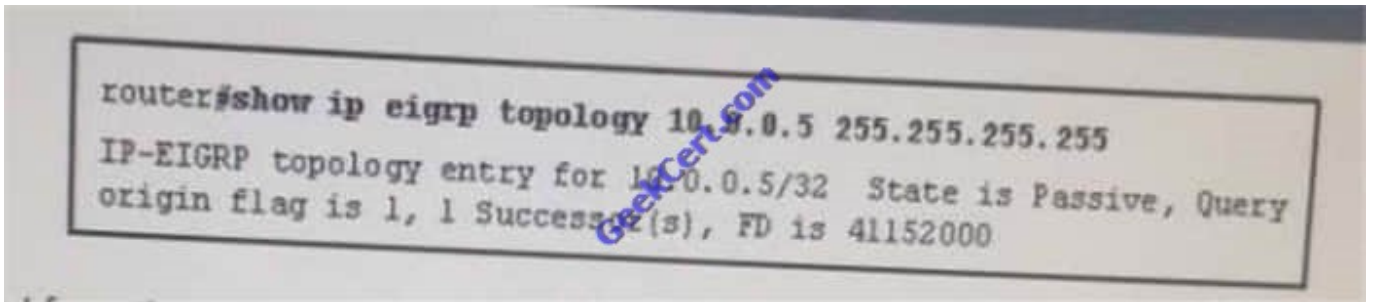
- A. Switch(config-if)#switchport mode dynamic auto
- B. Switch(config-if)#switchport mode trunk
- C. Switch(config-if)#switchport trunk allowed vlan 20
- D. Switch(config-if)#switchport mode dynamic desirable
- E. Switch(config-if)#switchport trunk encapsulation dot1q
- F. Switch(config-if)#switchport trunk native vlan 20

Correct Answer: BCE

Explanation

QUESTION 22

Refer to the exhibit.



Given the output from the show ip eigrp topology command, which router is the feasible successor?

A. 10.1.0.1 (Serial0), from 10.1.0.1, Send flag is 0x0 Composite metric is (46152000/41640000), Route is Internal Vector metric:

Minimum bandwidth is 64 Kbit

Total delay is 45000 Microseconds

Reliability is 255/255

Load is 1/255

Minimum MTU is 1500

Hop count is 2

B. 10.0.0.2 (Serial0.1), from 10.0.0.2, Send flag is 0x0 Composite metric is (53973248/128256), Route is Internal Vector Metric: Minimum bandwidth is 48 Kbit Total delay is 25000 Microseconds Reliability is 255/255 Load is 1/255 Minimum MTU is 1500 Hop count is 1

C. 10.1.0.3 (Serial0), from 10.1.0.3, Send flag is 0x0 Composite metric is (46866176/46354176), Route is Internal Vector metric: Minimum bandwidth is 56 Kbit Total delay is 45000 microseconds Reliability is 255/255 Load is 1/255 Minimum MTU is 1500 Hop count is 2

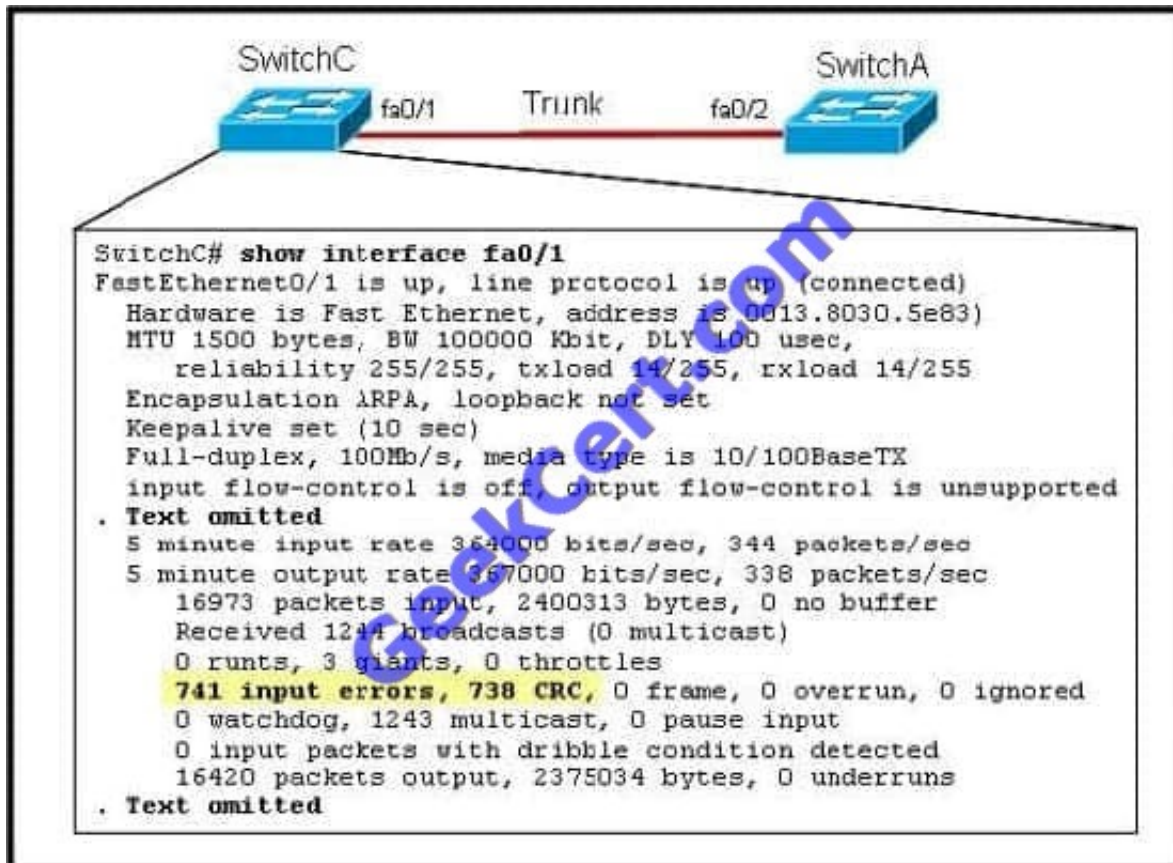
D. 10.1.1.1 (Serial0.1), from 10.1.1.1, Send flag is 0x0 Composite metric is (46763776/46251776), Route is External Vector metric: Minimum bandwidth is 56 Kbit Total delay is 41000 microseconds Reliability is 255/255 Load is 1/255 Minimum MTU is 1500 Hop count is 2

Correct Answer: B

Explanation

QUESTION 23

Refer to the exhibit.



Given this output for SwitchC, what should the network administrator's next action be?

- A. Check the trunk encapsulation mode for SwitchC's fa0/1 port.
- B. Check the duplex mode for SwitchC's fa0/1 port.
- C. Check the duplex mode for SwitchA's fa0/2 port.
- D. Check the trunk encapsulation mode for SwitchA's fa0/2 port.

Correct Answer: C

Here we can see that this port is configured for full duplex, so the next step would be to check the duplex setting of the port on the other switch. A mismatched trunk encapsulation would not result in input errors and CRC errors.

QUESTION 24

If you configure syslog messages without specifying the logging trap level, which log messages will the router send?

- A. error conditions only
- B. warning and error conditions only
- C. normal but significant conditions only
- D. all levels except debugging



E. informational messages only

Correct Answer: D

Explanation

QUESTION 25

What is the default Syslog facility level?

A. local4

B. local5

C. local6

D. local7

Correct Answer: D

By default, Cisco IOS devices, CatOS switches, and VPN 3000 Concentrators use facility local7 while Cisco PIX Firewalls use local4 to send syslog messages. Moreover, most Cisco devices provide options to change the facility level from their default value.

Reference: <http://www.ciscopress.com/articles/article.asp?p=426638>

QUESTION 26

Under normal operations, cisco recommends that you configure switch ports on which vlan ?

A. on the default vlan

B. on the management vlan

C. on the native vlan

D. on any vlan except the default vlan

Correct Answer: D

/Reference: <http://www.cisco.com/c/en/us/support/docs/switches/catalyst-6500-series-switches/24330-185.html>

QUESTION 27

On which options are standard access lists based?

A. destination address and wildcard mask



- B. destination address and subnet mask
- C. source address and subnet mask
- D. source address and wildcard mask

Correct Answer: D

Standard ACL's only examine the source IP address/mask to determine if a match is made. Extended ACL's examine the source and destination address, as well as port information.

QUESTION 28

Which command can be used from a PC to verify the connectivity between hosts that connect through a switch in the same LAN?

- A. ping address
- B. tracert address
- C. traceroute address
- D. arp address

Correct Answer: A

Explanation

ICMP pings are used to verify connectivity between two IP hosts. Traceroute is used to verify the router hop path traffic will take but in this case since the hosts are in the same LAN there will be no router hops involved.

QUESTION 29

What command instructs the device to timestamp Syslog debug messages in milliseconds?

- A. service timestamps log datetime localtime



To Read the [Whole Q&As](#), please purchase the [Complete Version](#) from [Our website](#).

Try our product !

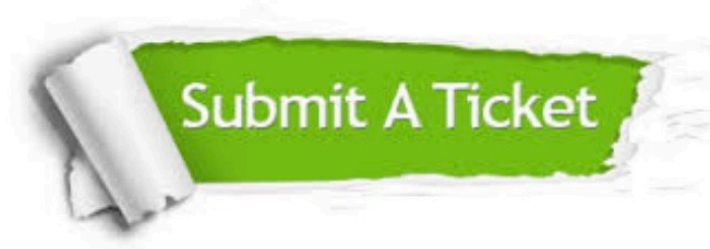
- 100% Guaranteed Success
- 100% Money Back Guarantee
- 365 Days Free Update
- Instant Download After Purchase
- 24x7 Customer Support
- Average 99.9% Success Rate
- More than 800,000 Satisfied Customers Worldwide
- Multi-Platform capabilities - [Windows](#), [Mac](#), [Android](#), [iPhone](#), [iPod](#), [iPad](#), [Kindle](#)

We provide exam PDF and VCE of Cisco, Microsoft, IBM, CompTIA, Oracle and other IT Certifications. You can view Vendor list of All Certification Exams offered:

<https://www.geekcert.com/allproducts>

Need Help

Please provide as much detail as possible so we can best assist you.
To update a previously submitted ticket:



 <p>One Year Free Update Free update is available within One Year after your purchase. After One Year, you will get 50% discounts for updating. And we are proud to boast a 24/7 efficient Customer Support system via Email.</p>	 <p>Money Back Guarantee To ensure that you are spending on quality products, we provide 100% money back guarantee for 30 days from the date of purchase.</p>	 <p>Security & Privacy We respect customer privacy. We use McAfee's security service to provide you with utmost security for your personal information & peace of mind.</p>
---	---	--

Any charges made through this site will appear as Global Simulators Limited.
All trademarks are the property of their respective owners.
Copyright © geekcert, All Rights Reserved.